



the PROMPTER

ALL THE NEWS THAT FITS, WE PRINT **OCTOBER 2010**



HAVE A BALL WITH US! November 12, 13, 14, 19, 20, 21

by Phoebe VanScoy-Giessler

Preparations for our annual fall musical are underway and it's sure to be magical. Director Kathleen Hill and musical director Keith Belanger lead us in Rodgers & Hammerstein's Cinderella. It's the classic fairy tale you know and love, but we guarantee there will be some surprises! This show features music and dialogue that ranges from heart-warming ("Do I Love You Because You're Beautiful?") to hilarious ("Stepsisters' Lament"), with special effects and costumes that will leave you amazed, and outstanding performances that will make you wonder if you're still in li'l old Wolfeboro.

We are thrilled to welcome some extremely talented new performers in this cast: (Cinderella), Angelo Bobbi-Lynne Cote Jean Gentile Other leading roles are Randy Lawrence-Hurt Katelyn Parker Gentile (King), (Queen), and (Stepmother). being played by (Prince), Carol Bense (Godmother), Lisa Hoover (Stepsister Portia), Jen Gagne (Stepsister Joy), John Findley (Herald), Wayne Gehman (Steward) and Mike Welch (Chef). Our ensemble also features a fantastic mix of VP veterans and newcomers: Anne-Marie Allwine, Lisa Beckwith, Teresa Crowell, Barbara Curtis, Steve Curtis, Meegin Ellis, Crystal Gauvreau, Mike Haeger, Don Hargy, Sherrie Hoover, Keith Hoover, Alec Kalled, Willie Mork, Corky Mork, Kristi Nieman, Victoria Neal, Jarrod Peterson, Jeanne Puglisi, Erik Peterson, Randi Talbot, and Jenni Talbot.



continued on page 3 -

"FIRST NIGHT" MELODRAMA AUDITIONS

by Carol Bense and Diane Sullivan

The Village Players will once again perform on Dec. 31st for "First Night" in Wolfeboro. Auditions will be held at the theater on Glendon Street October 18-19th at 7 PM. The play will be a one act melodrama/comedy called, Truth and Consequences by Daris Howard and will be directed by Gordon Brooks assisted by Helen Rautenberg. Performances will be at 6, 8, & 10 PM on New Year's Eve and will end in time for everyone to see the fireworks.

The heroine's father has died leaving an intriguing will. He left to his daughter his fortune, but no one knows where or what it is. The hero and his friends, Beaker and Charlie, have to find it before the villain and his cohort.

Beaker has created a truth potion, which the villain wants to use against the hero in a debate as they run against each other for mayor, but as usual the tables are turned. The fun comes from learning that sometimes even true things are better left unsaid.

Lots of fun in this show. Roles are as follows:

Frank, our young and handsome hero who always tells the truth.

Charlie, the older, ornery cowhand who is good, but not intellectually gifted.

Beaker, the nerdy genius type.

-continued on page 3-

CLEAN UP DAY NOVEMBER 6

Please come help clean the theater on November 6 from 9am to noon. Even if you can only spare an hour, that will help immensely. Every time we do a show, the entire main floor of the theater must be cleaned. For our summer show, only 4 people showed up: Carol Bense, Dick Cary, Russ Ellis and Willie Mork. It took us about 4 hours to get the job done. With 8 people it would only have taken 2 hours. Please consider this an opportunity to do your part to help The Village Players. Your help can really make a difference.



Unnecessary Farce Completely Necessary Wrap-up

by Meggin Dail

Believe it or not there were a lot more unnecessary things happening on the Village Players' stage in August than anyone may have guessed, for instance donuts and juice boxes - completely unnecessary. Half naked Scotsman, lollipops, real handcuffs and escape route plans - totally unnecessary. Hair pulling, leering and slapping, low-slung bras, knitting needles and so much more - also unnecessary.



What was completely necessary was the amount of time and patience it took to pull the whole thing off. While learning the lines had its usual stumbling blocks, learning the timing was a completely different animal. Holding two conversations on the stage at the same time while sorta kinda pretending you don't hear or see the other motel room - mind boggling. One of the silliest yet hardest shows to pull off, *Unnecessary Farce* was wildly successful as audiences came back for seconds assured they would not see the same show twice. Struggles - cast and crew had a few, but in the end a very close-knit kinship developed among all involved. Directors Jay Sydow and Russ Ellis have much to be proud of with this notch in their sporrans.



Remembering Bob Pralle

by Willie Mork

Long-time Village Player, Bob Pralle, passed away on



August 5 at Mountain View Nursing Home after a long illness. He was a founding member of Village Players and appeared in our very first production, *Yesteryears of Broadway* in 1978. Some of his favorite roles were as Sheridan Whiteside in *The Man Who Came To Dinner*; Poche in *A Flea In Her Ear*; Earthquake Mc Goon in *Li'l Abner*; Big Julie in *Guys 'n Dolls*; Judd Frye in our first musical, *Oklahoma!*, and The Ghost of Christmas Present in *A Christmas Carol*.

Bob's wife Carole and daughters, Jill and Sarah joined him in several Village Players' plays onstage and behind the scenes. Whenever there was a clean-up

day we could count on Bob and Carole to be there to lend a hand.

Bob was a contributing member of the local poetry group, writing several books of poetry, a frequent letter-to-the-editor writer on political matters and a frequent reader in the play reading group.

We'll miss Bob's big booming voice and presence. Our heartfelt sympathy to Carole, Jill and Sarah and the family.

Gifts in Bob's memory may be sent to:

The Village Players, PO Box 770, Wolfeboro, NH 03894.

Village Players Endowment Fund

by Willie Mork

At its August meeting, The Village Players Board of Directors voted to establish an Endowment Fund, the purpose of which is to designate a part of our assets to promote the long-term financial welfare of the organization, help it to manage and survive financial emergencies and to fund capital needs and special projects that further the objectives of The Village Players. These include providing live theater entertainment at reasonable prices and encouraging and developing participation in all phases of the theater arts.

An endowment fund ensures continuity of the organization, helps soften the blow of shortfalls from annual drives and disappointing sales and provides an instrument for charitable gift planning. The Endowment Fund will be managed by a five-person committee which will serve as custodians of its assets. \$\$\$\$\$

-Have a Ball With Us - continued

The production team and the board know that with a child-friendly fairy tale such as this, some very magical things need to happen. Therefore, in addition to the usual performances at 8PM on Fridays and Saturdays and 2PM performances on Sundays, this year there is an additional matinee at 2PM on Saturday, November 20. Likewise, there will be a character lunch on Saturday, November 13 at the Region 9 Vocational Center's Diningroom (Kingswood High where Princesses and Princes ages can dine in style, some songs from the show course, with a chance to meet favorite Cinderella characters. details on this luncheon will be

Keith rehearses us



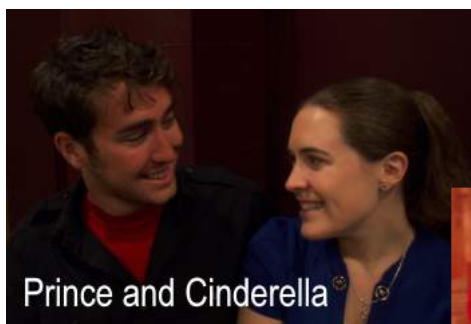
13 at the Skylight School) of all enjoying and, of their More forthcoming

This classic musical is coming to life thanks to the generous talent and support of the production team. Producer is Russ Ellis and Phoebe VanScoy-Giessler is assistant director. Head costumer, Stef Marsh, is pulling out all the stops to ensure that our Princess is Princess-ier, Stepsisters are Uglier, and Charming is Charming-er. The pumpkin coach is being designed and built by Mike Welch while Jay Sydow is heading a gifted crew to build a set which includes a giant story book – with turning pages – to set each scene. Judy Gallagher is searching high and low for props, Hunter Emory is creating the lighting design, Nettie Fiorini returns to head make up, and Megan Rohrbacher will lead the crew as Stage Manager.



Stef and dresses, dresses, dresses

Tickets are available on-line at village-players.com and at Black's Paper & Gifts on Main Street in Wolfeboro. Members can get their member discount of \$3 by logging on to the member site to buy tickets on-line, or, if you buy your tickets at Black's you can ask for your discount at the ticket office when you go to the show. Black's cannot give the discount.



Prince and Cinderella



Directors working

-First Night Auditions- continued

Hobart, the villain, older and conniving.

Adeline, our heroine, who is pretty, young and innocent.

Bertha Barton, villainess, Adeline's tough, bossy aunt.

Josie Barton, Bertha's daughter, nerdy, scared of mom.

Judy, the judge and one tough cookie.

2 extras, male or female.

To learn more about Truth and Consequences go to:

<http://www.dramasource.com/itempage.php?1=ATAC>. If you have any questions about auditions, please email Gordon at: gordon@thebrooksbunch.com

FALL FUND-RAISING CAMPAIGN

By Carol Bense and Stefanie Marsh

Your Fund-raising and Grant Committee has added a new member. Betty King joins Carol Bense, Theresa Crowell, Kathleen Hill, Stefanie Marsh, Willie Mork, Diane Sullivan, and Barbara Wilson to work on raising funds to continue the restoration of our building.

At a meeting on September 13 committee members had a good time brainstorming ideas for the coming year.

We are hoping to have a guest artist perform at the theater in the late winter/early spring. And for the following year, we are planning "Glamour in Mud Season". We're not entirely sure what this might entail, but are considering a poster contest for artists, variety show, fashion show, costume auction, house tours, and of course, elegant cuisine. We want to call attention to the theater's rich history, and remind everyone that you can always find glamour at the Village Players.



The group is finishing up the annual appeal letter. Members are planning ways to sell more ads and are seeking Players who will join their efforts to help sell more ads for our program this year. And everyone is excited to assist with the Cinderella character brunch and sales of fairy tale merchandise.

The Committee is always looking for enthusiastic Players and community members to help with projects and ideas. The next meeting is scheduled for November. To learn more, contact Stef Marsh at tumbledown@metrocast.net or 569-6382.

Once again we will be conducting our annual Fall Fund-raising Campaign asking all of you to help with whatever amount you can afford. Our next building project is to improve the stage so that we can produce more complex and exciting shows with more room for props and scenery. This will be an expensive project and we expect it will take several years to amass the funding. Your support is critical to this project. Please respond to the mailing you receive, or go on-line (www.village-players.com) to donate with your credit card through Paypal.

CONTACT US...

snail-mail: P.O. Box 770, Wolfeboro, NH 03894

Voice-mail: 603-569-9656

web site: www.village-players.com

2010 Village Players Board

President -	Diane Sullivan.....	539-4425
Vice President -	Jay Sydow.....	875-6792
Secretary -	Kathleen Hill.....	520-1372
Treasurer -	Richie O'Brien.....	569-3485
Members at Large -	Theresa Crowell.....	522-2138
	Jen Gagne.....	339-1381
	Jim Pittman.....	539-7694
	Kathleen Whitehead.....	539-4973
	Mandy Ferriman.....	651-6068

Board meetings are scheduled for the first Monday evening of each month. All dues-paying members are also welcome to attend. Be sure your membership is current to receive your newsletter and special membership deals. Contact Carol Bense - cwbense@roadrunner.com or 569-1396 - if you have changes in your address or email, or if you are unsure about your membership status.

Newsletter Committee

Carol Bense
Willie Mork

Phoebe VanScoy- Giessler
Jay Sydow

Art Production

Carol Bense



P.O. Box 770 Wolfeboro, NH 03894

NON-PROFIT ORG
US POSTAGE
PAID
COMPUPRINT
03867

ANNUAL MEETING AND ELECTIONS COMING UP

The Village Players will be holding its annual meeting and elections on Sunday, November 14th at 4:30 p.m. We will have a brief meeting and then elect the following positions for our board: President, Vice President, Secretary, Treasurer, and two 2-year Members at Large. If anyone is interested in being on the board and on the ballot, please contact Diane Sullivan at: disully@worldpath.net or call 539-4425

It is very important that all members in good standing attend as we need a quorum in order to hold the elections.

Because of the scheduling of our fall musical, Cinderella, we will not be holding a pot luck super; however, we will have a dessert hour, so please bring a dessert to share and a beverage. See you at Cinderella and at the meeting.

Don't Forget!

You can join, donate, or order tickets to our show on-line with credit card or Paypal.

Members should log into their account and then purchase tickets.