

## CONTACT US

snail-mail: PO Box 770, Wolfeboro, NH 03894

voice-mail: 603-569-9656

web-site: www.village-players.com

### 2008 - 2009 Village Players Board

President -	Diane Sullivan	539-4425
Vice President -	Mandy Ferriman	651-6068
Secretary -	Kathleen Whitehead	539-4973
Treasurer -	Joyce Wood	539-3259
Members at Large -	Kathleen Hill	520-1372
	Russ Ellis	569-1218
	Richie O'Brien	569-3485
	Betty Sherwood	569-5459
	Jim Pittman	539-7694

Board meetings are scheduled for the first Monday evening of each month. All dues-paying members are also welcome to attend. Be sure your membership is current to receive your newsletter and special membership deals. Contact Patti Pardy - [pardys4@aol.com](mailto:pardys4@aol.com) - if you have changes in your mailing address.

#### Newsletter Committee

Carol Bense Dick Cary  
Willie Mork Phoebe VanScoy-Giessler

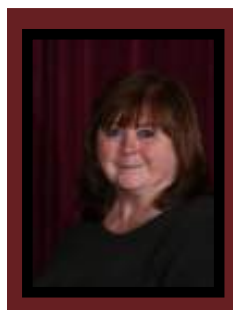
#### Art Production

Richie O'Brien [richie@mirrorlakemedia.com](mailto:richie@mirrorlakemedia.com)



PO Box 770, Wolfeboro, NH 03894

NON-PROFIT ORG  
US POSTAGE  
**PAID**  
COMPUPRINT  
03867



PROFILING NEW BOARD MEMBER  
THERESA CROWELL

Theresa Crowell has been involved in theater her whole life. She started at age 9 with the Rochester Music Theater and has been involved with several area theater groups ever since. She grew up in Rochester but has lived in several towns and recently lived in Wolfeboro and will always feel this is her town as she loves the area. She loves to perform, sing, dance, and do family things. She has been involved and a member of the Village Players for many years.

# the PROMPTER

ALL THE NEWS THAT FITS, WE PRINT DECEMBER 2009



### AUDITIONS COMING UP

Auditions for The Village Players Spring production *Dilemmas With Dinner* are coming up at 7pm on Sunday, December 13 and Monday, December 14 at the theater on Glendon St. Carol Bense, the director, will be looking for people who want to have a great time as well as work hard to make this hilarious farce a success.

Author Robin Roberts has written side-splitting comedy into this script. All we have to do is make it happen. Junior executive Brooke invites her boss and his wife over for dinner in the hopes of securing a promotion. Brooke's husband, who is trying to move his bookstore business to a new location, is practically crippled by his totally clumsy assistant, whom he has already fired and taken back five times. While frantically getting ready, Brooke and her husband discover that the hired help is coincidentally the boss' ex-daughter-in-law. Just when it seems everything that could go wrong has gone wrong, Brooke's boss has an unfortunate announcement to make though not as unfortunate as the candlestick attack, appetizer toss, and general chaos that then ensues... *Dilemmas With Dinner* is sure to keep the audience laughing hysterically and to be great fun to work on.

We need 4 males and 4 females for this cast:  
Caren: a caterer in her late twenties, efficient, major role  
Brooke: a junior executive in her early thirties, frazzled most of the time, major role.  
Donny: Brooke's long-suffering husband and owner of a bookstore, early thirties, in pain and showing it, major role.

Max: Donny's assistant, early twenties or older, total klutz, large role  
Julia: Brooke's assistant, mid twenties, kind of a wise cracker, major role  
Stephen: Julia's boyfriend, late twenties, large role  
Will: Chief Executive Officer of Carmichael and Associates and Brooke's boss, fifties, self-important, know-it-all, medium role  
Louise: Will's wife, early fifties, forgetful, flighty, ditsy, medium role.

We also need people interested in working on all aspects of the show including, set, lights, publicity, costumes, etc. If you would like to participate, please come to one of the auditions. If you cannot come to either audition, please contact Carol Bense at 569-1396 or send email to [cwbense@roadrunner.com](mailto:cwbense@roadrunner.com). We are always looking for new faces both on and off stage. You'll have a great time working on this show.

### FIRST NIGHT FUN

**D.K. MOLAR** *The* **DEVIANT DENTIST**

or... There's Gold In Them Thar Teeth!

Feeling a bit down in the mouth lately? Then this over the top melodrama written by Billy St. John, will surely put a smile on your face! The depraved dentist, D.K. Molar, and his noxious nurse, Nova Caine, have crafted a dastardly scam: after putting their patients to sleep with nitrous oxide, they remove the gold crowns and replace them with fakes made of fool's gold. The unsuspecting patients are none the wiser. That is until Dr. Molar's new receptionist, the lovely Flossy Dailey, starts chewing over some of the strange happenings in the office. With Phil de Tooth, an upstanding young dentist, she discovers Molar is prospecting for more than overbites. Molar, true to his calling, pulls a gun on them and threatens to drill anyone who tries to stop him. But remember, keep your mouth shut and brace yourself for the hilarious climax, which may involve escaped laughing gas! It's guaranteed to be the most enjoyable visit to the dentist you have ever had!

(continued on page 3)

Did you know?  
You can purchase tickets on-line from The Village Players website? [www.village-players.com](http://www.village-players.com)  
Click on the link:

## OUR FALL PRODUCTION MAME

Once the cast of *Mame* had taken their bows and audience members had vacated the auditorium, Diane Sullivan called the annual meeting to order at 5:22 p.m. She reminded those attending that only members who had paid their 2009 dues by the April 1 deadline had voting privileges, and announced that 2010 membership applications would appear in an upcoming Prompter.

She then welcomed any reports from committees or officers. Joyce Wood, current treasurer, said donations were arriving regularly from the fundraising campaign, and Diane Sullivan added that more than \$3,000 had been received thus far, assuring everyone that The Village Players was in the black.

Russ Ellis, chairman of the Building Committee, said with a chuckle that he and his crew try their best to fix things as they break. He continued with news from the Stage Committee, saying that plans were underway for the new stage area, and that many had contributed ideas to the wish list. Architectural drawings now were needed for more accurate estimates by contractors a necessity that could cost a considerable amount of money.

Diane Sullivan commented that when she became president she had set several goals. She went on to list a number of accomplishments this year, including expansion of our sprinkler system to the upper floors, which now allows the use and possible rental of the entire building. A new compressor for the sprinkler system also was installed. Motion lighting now brightens the Blue Room and Green Room, with its automatic on-and-off based on activity. Thanks to Hunter Emory, new lighting hangs from the auditorium ceiling. Two cordless mikes that proved ideal for our comedy shows were purchased, and more recently a new communication system was acquired for use by those backstage and in the lighting and sound booth during productions. She reported that although applications for grants from Festival of Trees and New Hampshire Charitable Foundation had been turned down, Ready Cash was used to buy new travelers in time for *Mame*. Hopefully funds will be found down the road for a new curtain. Diane explained that she decided to combine the efforts of the Fundraising Committee and Grant Committee because often grants are available to pay for entertainers in fundraising events.

She praised the many good people who have come aboard to serve on her committees, saying this lightens the load carried by board members so they can concentrate on the business at hand.

Diane announced that board members decided to keep the theater open for use this winter, including performances of *D. K. Molar the Devious Dentist* at 6, 8 and 10 p.m. for First Night Wolfeboro. Diane Sullivan will be directing, and auditions were scheduled for 7:30 p.m. November 15 and 16.

She thanked all board members whose terms of service ended as of December 31, 2009 Russ Ellis as past president, Mandy Ferriman as vice president, Joyce Wood as treasurer, Kathleen Whitehead as secretary, and Betty Sherwood and Jim Pittman as members at large. She explained that Kathleen had travel plans and didn't think she should continue with the many duties of secretary if absent for an extended time.

Titles of shows for 2010 were presented. *Dilemmas at Dinner* will be our spring show directed by Carol Bense. Carol will hold auditions December 13 and 14. Russ Ellis and Jay Sydow will direct the summer show, entitled *Unnecessary Farce*, and Kathleen Hill will take on *Cinderella* for our fall musical. (continued on page 3)



## MINUTES OF THE ANNUAL MEETING ( continued from page 2)

A final announcement was the availability of forms for those wanting to advertise in the 2010 program.

The list of candidates for new board members was presented by Willie Mork and Carol Bense:

President Diane Sullivan

Vice President Jay Sydow

Treasurer Richie O'Brien

Secretary Kathleen Hill

Members at Large for 2 Years (Choose 2): Kathleen Whitehead and Jen Gagne

Members at Large for 1 Year (Choose 3): Theresa Crowell, James Cross and Jim Pittman

Diane Sullivan then asked for further nominations, but none were made.

Carol Bense told those attending that membership fees paid after September 1, 2009 would be considered payment for 2010 dues.

Since there were no further nominations, Richie O'Brien made a MOTION that the secretary cast one ballot for the slate presented by the nominating committee. This was seconded by several and passed by a majority vote with only one Nay because his paper vote already had been turned in.

The meeting was adjourned to a potluck supper at 5:55 p.m.

Respectfully Submitted, Kathleen Whitehead, Secretary

## FIRST NIGHT FUN

(continued from page 1)

Diane Sullivan is directing and there will be three performances at 6pm, 8pm, and 10pm on December 31st at our theater on Glendon St. Entrance is free with official Wolfeboro First Night Button which will be available at local stores and at the Wolfeboro Chamber of Commerce.

D.K. Molar is produced by special arrangement with Pioneer Drama Service, Inc., Englewood, CO.

## LEADERSHIP LAKES REGION'S HISTORY AND CULTURE DAY

On the afternoon of November 12th the Leadership Lakes Region Organization spent the afternoon at our theater in a training session on the history and culture of the area. Approximately 25 people attended the session. Diane Sullivan, Willie Mork, and Carol Bense spoke to the group and provided tours of the theater. Other speakers included George Cleveland, Chairman of The Barnstormers.

## DON'T FORGET YOUR DUES ARE DUE

After much thought and discussion the board has raised the dues for 2010. For years, dues have been \$10 per individual or \$18 for a family. This year they will be \$12 per individual and \$20 for a family. We hope you understand that the increase in all our expenses has created the need for this increase. Your dues for 2010 must be paid before April 1, 2010 if you wish to be able to vote at the next annual meeting. We hope you will send them in now. You can cut out this form and mail a check made out to The Village Players to PO Box 770, Wolfeboro, NH 03894 or you can go on-line to [www.village-players.com](http://www.village-players.com) and pay by credit card or Paypay. If you paid your dues after September 1, 2009, they will automatically be applied to your 2010 dues. WHY WAIT? TAKE CARE OF IT NOW WHILE YOU ARE THINKING OF IT. WE NEED YOUR SUPPORT TO CARRY ON OUR PROGRAMS.

## The Village Players Membership Form 2010

The Village Players • PO Box 770, Wolfeboro, NH 03894 • 603-569-1396 • [www.village-players.com](http://www.village-players.com)  
(please print)

Name \_\_\_\_\_

Address \_\_\_\_\_

Phone # \_\_\_\_\_ E-mail \_\_\_\_\_

Would you prefer to receive your Prompter Newsletter via e-mail? \_\_\_ Yes \_\_\_ No

Call me to help on a Committee / Project / Production \_\_\_\_\_

Individual \$12 \_\_\_ Household \$20 \_\_\_ Check # \_\_\_ Date \_\_\_\_\_

(Remit payment directly to The Village Players by April 1, 2010 to be a current voting member)

Please make checks payable to The Village Players, and mail to PO Box 770, Wolfeboro, NH 03894  
or go on-line to [www.village-players.com](http://www.village-players.com) to pay with credit card or Paypal.