

CONTACT US

snail-mail: PO Box 770, Wolfeboro, NH 03894

voice-mail: 603-569-9656

web-site: www.village-players.com

2010 Village Players Board

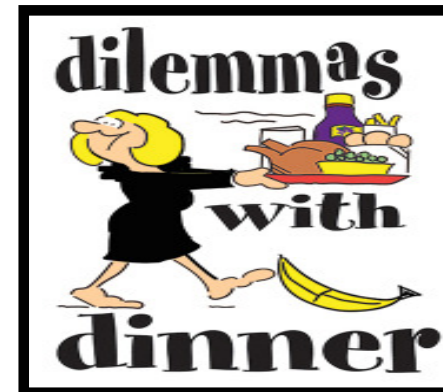
President -	Diane Sullivan	539-4425
Vice President -	Jay Sydow	875-6792
Secretary -	Kathleen Hill	520-1372
Treasurer -	Richie O'Brien	569-3485
Members at Large -	Theresa Crowell	569-2012
	Jen Gagne	569-7421
	Jim Pittman	539-7694
	Kathleen Whitehead	539-4973
	Mandy Ferriman	657-6068

Board meetings are scheduled for the first Monday evening of each month. All dues-paying members are also welcome to attend. Be sure your membership is current to receive your newsletter and special membership deals. Contact *Carol Bense* - cwbense@roadrunner.com - if you have changes in your mailing address.

Carol Bense *Newsletter Committee* Dick Cary
Willie Mork Phoebe VanScoy-Giessler
Art Production
Carol Bense

The Village Players the PROMPTER

ALL THE NEWS THAT FITS, WE PRINT FEBRUARY 2010



OUR SPRING PRODUCTION COMING UP

Set aside one of these evenings - April 2, 3, 9, 10 or come to the matinee on Sunday, April 11 at 2pm. You won't want to be one of those folks who missed this hilarious production of a new farce written in 2005 and not often seen. *Dilemmas With Dinner*, written by Robin Roberts, is one of those whacky shows in which the fun never stops.

What happens? Up and coming junior executive, Brooke (Kalin Jordan) knows that a management position is opening up in her firm and decides to hold a dinner party for her boss, Will (Wayne Gehman), and his wife, Louise (Barbara Wilson). If Brooke can just show Will what a great job she does organizing the dinner party, maybe he will consider her for the position. She has hired a caterer, Caren (Megan Rohrbacher), to take care of the cooking and serving, but the flowers haven't arrived and she doesn't have enough napkins, and she can't find the candles, etc. Brooke is counting on help from her husband, Donny (Bob Tuttle), but when he arrives from work his back has been injured and he can hardly move. To make matters worse, his employee, Max (Corky Mork), who caused the injury has followed Donny home to plead for his job after being fired (for the fifth time).

Brooke's friend, Julia (Amy Knapp), arrives to try to reduce the chaos to a manageable level. But, when her fiancée, Stephen (Gordon Brooks), arrives to help, she discovers that he has dated Caren in the past and Julia is not about to let that go.

Caren also reveals that she is the hated ex-daughter-in-law of Will and Louise, though she doesn't know they are the dinner guests. Brooke must keep Caren in the kitchen, so she enlists Max to serve the meal. Big mistake. Max turns out to be the world's worst klutz. It's just one crisis after another.

Director, Carol Bense, says "To say this is physical comedy is a gross understatement. You have to see it to believe it." She and Assistant Director, Kristi Nieman, along with the actors have been having so much fun at rehearsals, they almost don't want it to end.

The show is being produced by Jen Gagne who has rounded up some great talent to help back-stage. Stage Manager is Don Hargy, a brand-new member of our group. Costumes will be co-ordinated by Deb Jones, and Set Designer is Corky Mork. Publicity will be organized by Phoebe VanScoy-Giessler, props by Betty Sherwood, and Jay Sydow is the House Manager. The logo was created by Jeannette D'Onofrio.

Tickets (\$12) will be available by March 1st on-line at www.village-players.com or at Black's Paper and Gifts on Main St. "Don't let this one slip by you," advises Carol.

NEW MEMBERSHIP WEBSITE

Last year membership software was donated to the Village Players which will help us track membership more accurately and easily, as well as enabling us to email the newsletter to those that may prefer it that way. It will also enable Village Players to offer a members area web site where, soon, tickets can be purchased and any discount will automatically be applied. To use the Member Access link on the Village Players website, you will need a user name and password to login. Anyone that has already paid dues for 2010 has been added to the software and an email with your login information has been sent to you, if we had your email address.

It would be appreciated if all of you that can would sign up online and renew online from now on. You can do that by going to <http://www.mirrorlakeinteractive.com/amember> or click on the Join Us link or Member Access button on the Village Players site to renew. If you sign up online you can use either a credit or debit card which will be processed through PayPal

If you choose to pay by check a membership account will be created for you and your login information will be sent to the email address you gave us, so be sure to give us your email if you have one and make sure it is correct. If you don't have an email address or don't want to sign up online simply send us a check with the form as you always have.

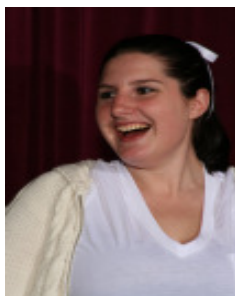
If you any problems with the new system please email Richie at Richie@mirrorlakemedia.com



PO Box 770, Wolfeboro, NH 03894

NON-PROFIT ORG
US POSTAGE
PAID
COMPUPRINT
03867

MEET NEW BOARD MEMBER JEN GAGNE



Jen Gagne has been elected to the VP Board for 2010, but she is not new to the group, having performed in *The Pajama Game* in 2007. In fact since we first met Jen, she has been married and has had her first child, Elizabeth, born on December 7, 2008. She moved from Manchester to Wolfeboro in June 2006 with her husband Jayson. She works as a Patient Service Coordinator at

Wolfeboro Pediatrics. When not working or on stage, she loves to read.

Jen just completed a role as Iva Paine in our First Night Production. She has also played Madame Branislawski in *Mame*, Essie in *You Can't Take It With You*, and Mother in *The Best Christmas Pageant Ever*. As well as serving on the board, she is currently the producer of our spring show, *Dilemmas With Dinner*.

Did you know?
You can purchase tickets on-line from The Village Players website?
www.village-players.com
Click on the link:





First Night Wrap Up photo by Jim Pittman

By Diane Sullivan

The title itself made people laugh before the show even started.... *D.K. Molar, The Devious Dentist....or "thar's gold in them thar teeth"*, a very funny melodrama by Billy St. John.

Character names were a big laugh as well. First there was the villain: D.K. Molar, superbly played by Greg Parker with moustache and all, and his partner in crime, Nova Caine, played by Tori Neal who gave it just the right villainous touch. The very sweet new receptionist, heroine Flossy Daily was the love of the audience and Lisa Hoover did a fantastic job with her role. The patients named, Polly Dent and Iva Paine, were portrayed by Emily Marsh and Jen Gagne, respectively and were the perfect patients with many gold crowns. Then, of course, there has to be a hero in a melodrama and that was Phil deTooth, played by Brian Kuhrt, a welcomed newcomer to the VPs. The director, Diane Sullivan, enjoyed working with the young adult cast and found it a pleasant experience as this was only the second one-act play she has directed. She now looks forward to directing a full length play in 2011.

This production was the first time the Village Players has done a monochrome play in tones of black and white. Everything went from black to grays to white and off whites including the non-color makeup by Helen Rautenberg, the set and all the accessories on stage. Even the costumes by Diane coordinated the tone. The set was designed by Hunter Emory and put together with the help of Russ Ellis and Jay Sydow. The painting and wonderful finishing touches were completed by Kathy Whitehead while Betty Sherwood provided the props, still in black and white, except for the handmade gold crowns, the only thing that held color on stage.

The lighting was carefully placed and frosted gels were added by Hunter, while Matt Johnson worked with the

lights in order to create the feeling of a black and white film and Tim Brown ran the spot. During the fight involving all the actors, Matt turned on the flicker light and it looked like an old Charlie Chaplin movie. The back stage crew of Jim Pittman and Jerrod Peterson added to the success along with Athena Ellis as House Manager and many ushers.

The First Night production filled up for all three performances and the audience laughed, booed, hissed, and cheered during all the shows. Fun was had by all including the cast and crew and it was a great way to toss out the old year and ring in the new 2010.



??? FUND RAISING ???

Many of you have done your part to help us raise the funds we need to continue with renovations to our theater. The fund-raising committee is very grateful to those of you who participated. We raised a total of \$14,381.00 in response to our appeal as well as from some other sources. This is great, but not enough to begin the next phase of renovations. We have done so much for the comfort of the audience, now it is time to do something for our actors and directors, as well as the audience. The next phase involves enlarging and modifying our stage in order to facilitate larger and more complex productions. It will be an expensive proposition. If you haven't donated yet, please consider doing so. Whatever amount you feel you can afford will help us.

You can send a check to The Village Players, PO Box 770, Wolfeboro, NH 03894 or you can go on-line and click on the DONATE button to pay by credit card or Paypal.

If you would like to help out on the fund-raising committee, we would love to have you join. Please contact Diane Sullivan at disully@worldpath.net or 539-4425

Spiffing Up New Wood Floors

Time, sand and many feet have taken their toll on the theater's renovated floors. Early in January the floors in the reception room, the lobby next door and the ticket lobby, as well as the stairs to the blue room were cleaned, sanded and refinished with urethane by Greg Crowell in just one weekend. They look really spiffy. Let's all help keep them that way by remembering to wipe our feet when we come in from outside.

Branding 2012 lands on KRHS Stage

On March 12th and 13th at 7:00 pm, the Kingswood original production of *Branding 2012* comes to the Kingswood Regional High School Stage.

Branding 2012, directed by The VP's Scott Giessler, is about a family moving into a new town where everyone seems to be caught in a superficial trance.

The father, Greg, (Nick Moulton) struggles to find meaning in this new town. With constant pressure from his wife Moira (Allison Inglis) to buy a new car and send their daughter Rebecca (Maddy Berry) to prep school, Greg doesn't know what to do.

Meanwhile, he also struggles with his strange new job. His boss, Mike, (Alex Mitchum) enforces the abnormal rules with the help of Angela (Courtney Cleveland) and Meg (Kristina Adjutant), but there is a mysterious machine in his new office. Could the machine be the key to all of the abnormalities in his new town?

Save the date! If you've ever seen a Kingswood production, you know you won't want to miss it.... March 12th and 13th at 7:00pm. See you there!

DON'T FORGET -- YOU WILL NOT BE ABLE TO VOTE AT THE ANNUAL MEETING IF YOUR DUES ARE NOT PAID BEFORE APRIL 1, 2010

After much thought and discussion the board has raised the dues for 2010. For years, dues have been \$10 per individual or \$18 for a family. This year they will be \$12 per individual and \$20 for a family. We hope you understand that the increase in all our expenses has created the need for this increase. Your dues for 2010 must be paid before April 1, 2010 if you wish to be able to vote at the next annual meeting. We hope you will send them in now. You can cut out this form and mail a check made out to The Village Players to PO Box 770, Wolfeboro, NH 03894 or you can go on-line to www.village-players.com and pay by credit card or Paypal. If you paid your dues after September 1, 2009, they will automatically be applied to your 2010 dues. You can check on-line to see if you have paid. **WHY WAIT? TAKE CARE OF IT NOW WHILE YOU ARE THINKING OF IT. WE NEED YOUR SUPPORT TO CARRY ON OUR PROGRAMS.**

The Village Players Membership Form 2010

The Village Players • PO Box 770, Wolfeboro, NH 03894 • 603-569-1396 • www.village-players.com
(please print)

Name _____

Address _____

Phone # _____ E-mail _____

Would you prefer to receive your Prompter Newsletter via e-mail? ___Yes ___No

Call me to help on a Committee / Project / Production _____

Individual \$12___ Household \$20 ___ Check # _____ Date _____

(Remit payment directly to The Village Players by April 1, 2010 to be a current voting member)

Please make checks payable to The Village Players, and mail to PO Box 770, Wolfeboro, NH 03894 or go on-line to www.village-players.com to pay with credit card or Paypal.

